

# Magic Leap Device Reset



There are **two ways** to reset the Magic Leap device to factory settings, **online and on the device itself**. There is currently no way to log your account off from a Magic Leap unit without restoring to factory settings.

When you reset the device the next user will have to re-download all updates to the device.

# Reset Magic Leap Device Online

The first way is to do it online by logging in to the Magic Leap website with the same email that was used to register the Magic Leap device.

- Account log in page: <https://auth.magicleap.com/signin>
- Instructions for resetting the device online:  
[www.magicleap.care/hc/en-us/articles/360020793512-Magic-Leap-Device-Reset](http://www.magicleap.care/hc/en-us/articles/360020793512-Magic-Leap-Device-Reset)

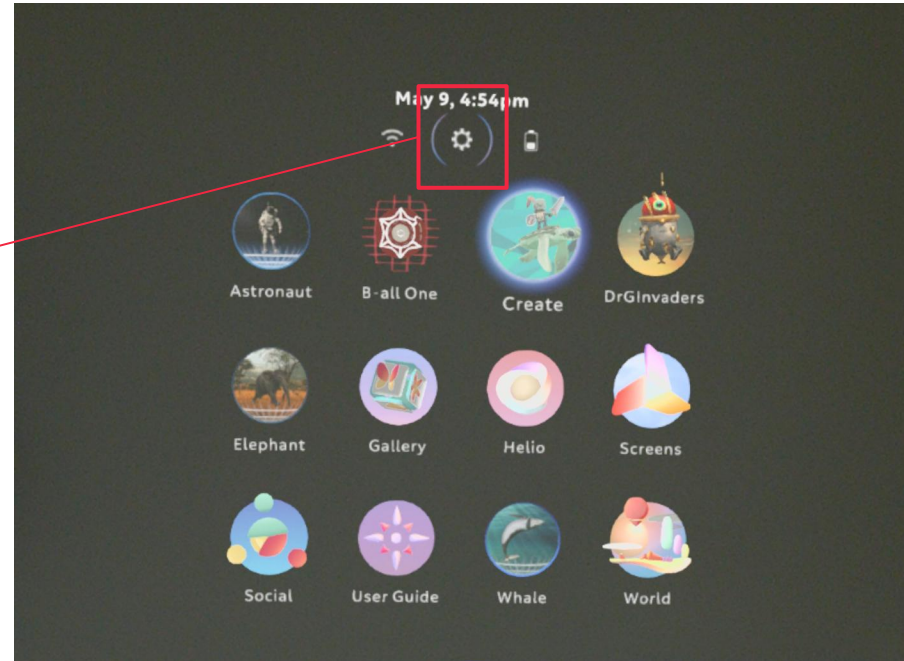
# Reset Magic Leap Device using the device

The second way is to put on the Magic leap goggles and manually reset the device.

You must turn on the device and wear it in order to complete the following.

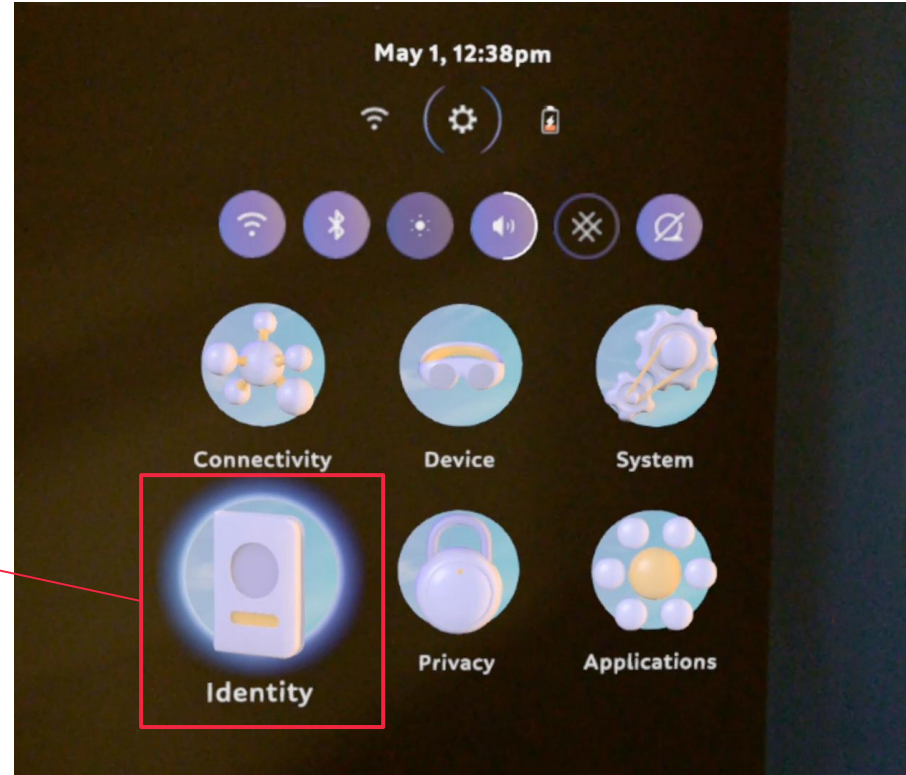
# Reset Magic Leap device using the device

## 1. Navigate to Settings



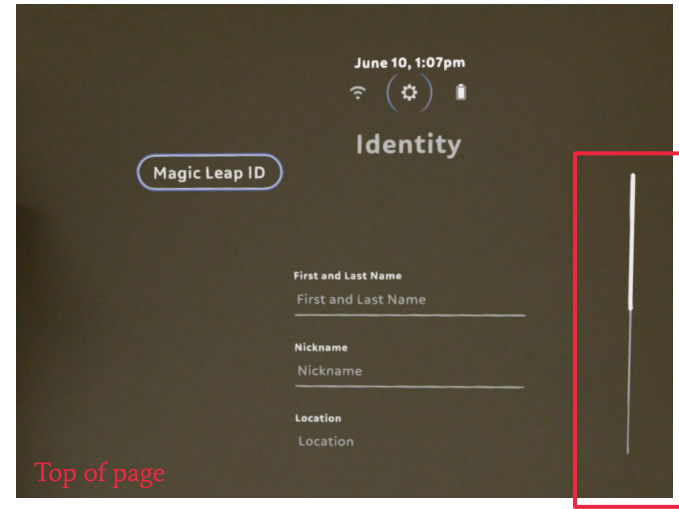
# Reset Magic Leap device using the device

2. Choose Identity

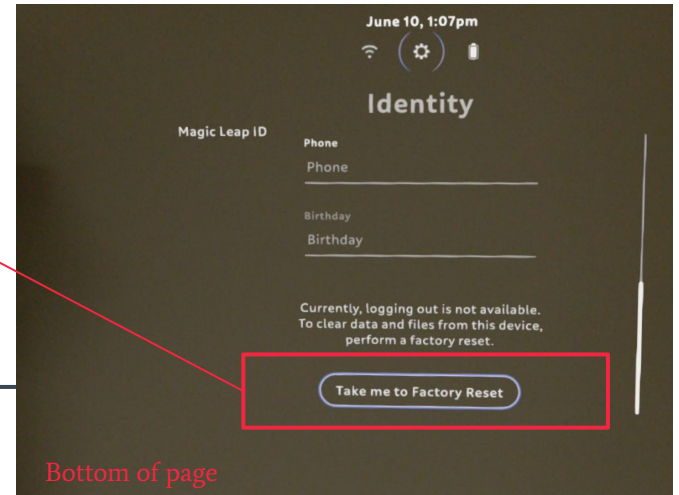


# Reset Magic Leap device using the device

## 3. Scroll Down to Factory Reset

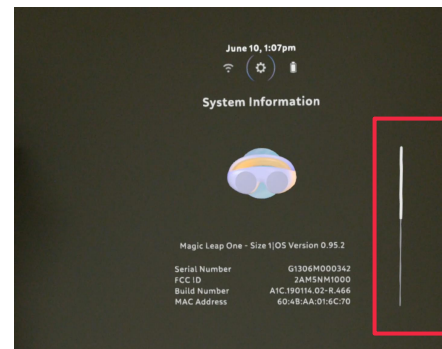


scroll

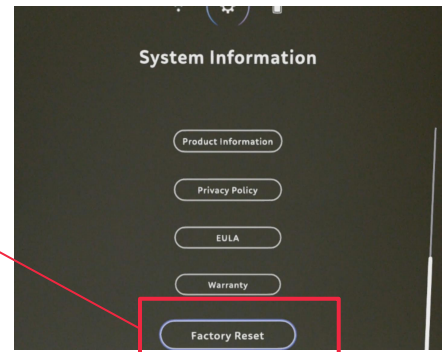
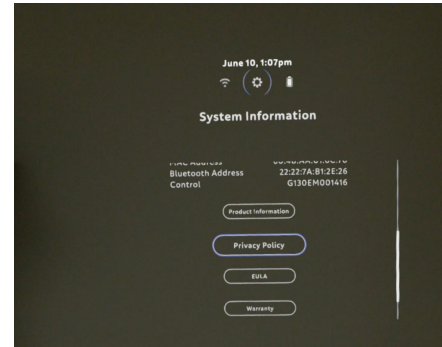


# Reset Magic Leap device using the device

4. In the new window, scroll down to  
“Factory Reset”



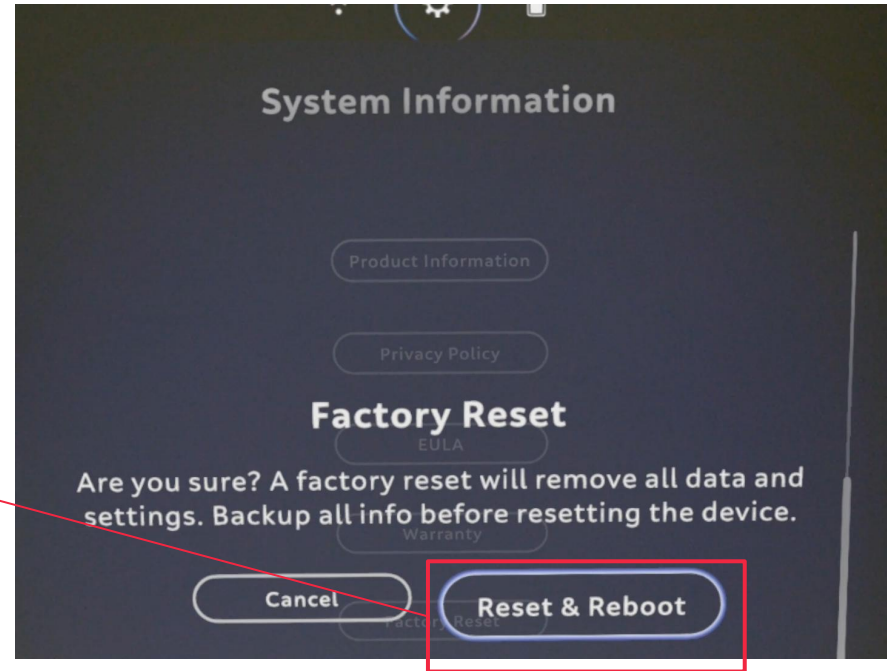
scroll





# Reset Magic Leap device using the device

## 5. Confirm Your Selection



# Reset Magic Leap device using the device

## 6. Wait for Set-Up Screen

At this point the Magic Leap device will go blank for about a minute before starting up again with the same menu as when it is first turned on out of the box. You can enter the new user information or shut off the device for the next use.

---